

For your next challenging storm sewer project, consider...

# WEHOLITE®

- A storm sewer system



- Profile-wall HDPE pipe
- Pipe sizes from 460mm (18") to 3050mm (120") ID
- Available in:
- 5.03m (16.5') and 7.62m (25') laying lengths with *Thread-Loc Joints\**  
OR
- 7.62m (25') and 15.24m (50')\*\* laying lengths for *Extrusion Welded Joints*
- Conforms to ASTM F894

Ideal for storm sewers, especially those:

- With aggressive waters
- With corrosive soils
- Where road salts are applied

\*Thread-Loc Joint not available in USA for pipe sizes of 1200mm (48") ID and smaller

\*\*12.19m (40') laying lengths for 2440mm (96") ID and larger

KWH Pipe (Canada) Ltd.

6507 Mississauga Rd.  
Mississauga, ON L5N 1A6

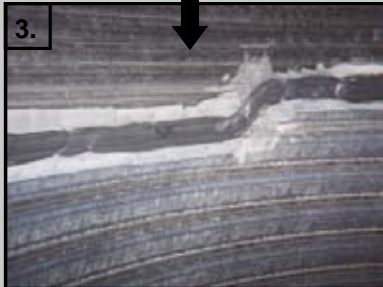
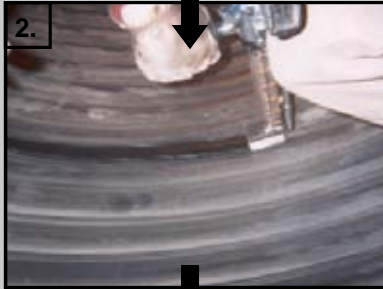
Telephone:  
(905) 858-0206  
1-866-594-7473  
Facsimile:  
(905) 858-0208

Internet:  
[www.kwhpipe.ca](http://www.kwhpipe.ca)

Email:  
[sales@kwhpipe.ca](mailto:sales@kwhpipe.ca)



## Extrusion Welded Joint



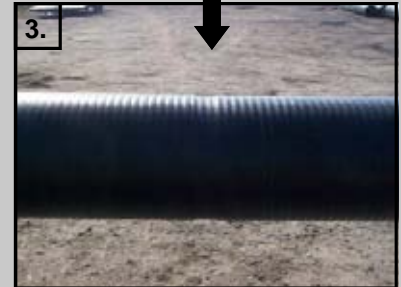
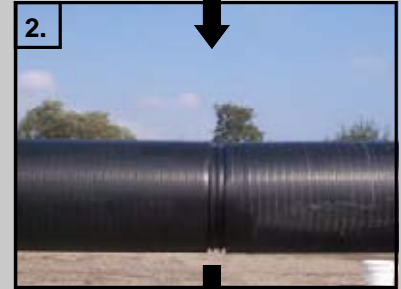
- Extrusion welded joints are leak-tight and pressure-rated
- Joining method results in a continuous, monolithic piping system
- Leak-free piping system for maximum flow capacity utilization and the elimination of ground and groundwater contamination
- Meets all leakage standards
- Standard working pressure rating up to 15 psi

## Why is Weholite® the right choice for your storm sewers?

- Corrosion resistant
- Outwear other traditional sewer materials
- Hydraulically efficient (Design Manning 'n' factor of 0.01)
- Sewer flows remain essentially unchanged during its entire service life
- ID of joint is basically the same as the pipe for minimal cleaning costs
- Fully-restrained joints eliminate the joint separations commonly found with other traditional sewer systems
- Long service life (50+ years) for lower life-cycle cost
- Smooth outer wall for easy placement of embedment materials in the haunch zone
- Long laying lengths for faster installation
- Lightweight construction for transport efficient loads as well as enabling the use of light-duty lifting equipment
- Allows for fast field length adjustments with standard cutting tools
- Tough and durable permitting installations at sub-zero temperatures and also decreases the likelihood of pipe damage during handling and installation



## Thread-Loc Joint\*



- Weholite's unique "Thread-Loc" joint enables municipal maintenance crews or contractors to assemble pipe
- Joint assembly is fast and positive
- Installs quickly and easily without requiring the use of special equipment

\* Thread-Loc Joint not available in USA for pipe sizes of 1200mm (48") ID and smaller

----- For your local Weholite distributor, contact KWH Pipe at (905) 858-0206 or 1-866-KWH-PIPE -----

KWH Pipe (Canada) Ltd.

6507 Mississauga Rd.  
Mississauga, ON L5N 1A6

Telephone:  
(905) 858-0206  
1-866-594-7473  
Facsimile:  
(905) 858-0208

Internet:  
[www.kwhpipe.ca](http://www.kwhpipe.ca)

Email:  
[sales@kwhpipe.ca](mailto:sales@kwhpipe.ca)

